



too complex to solve...
unpredictable
...too important not to!

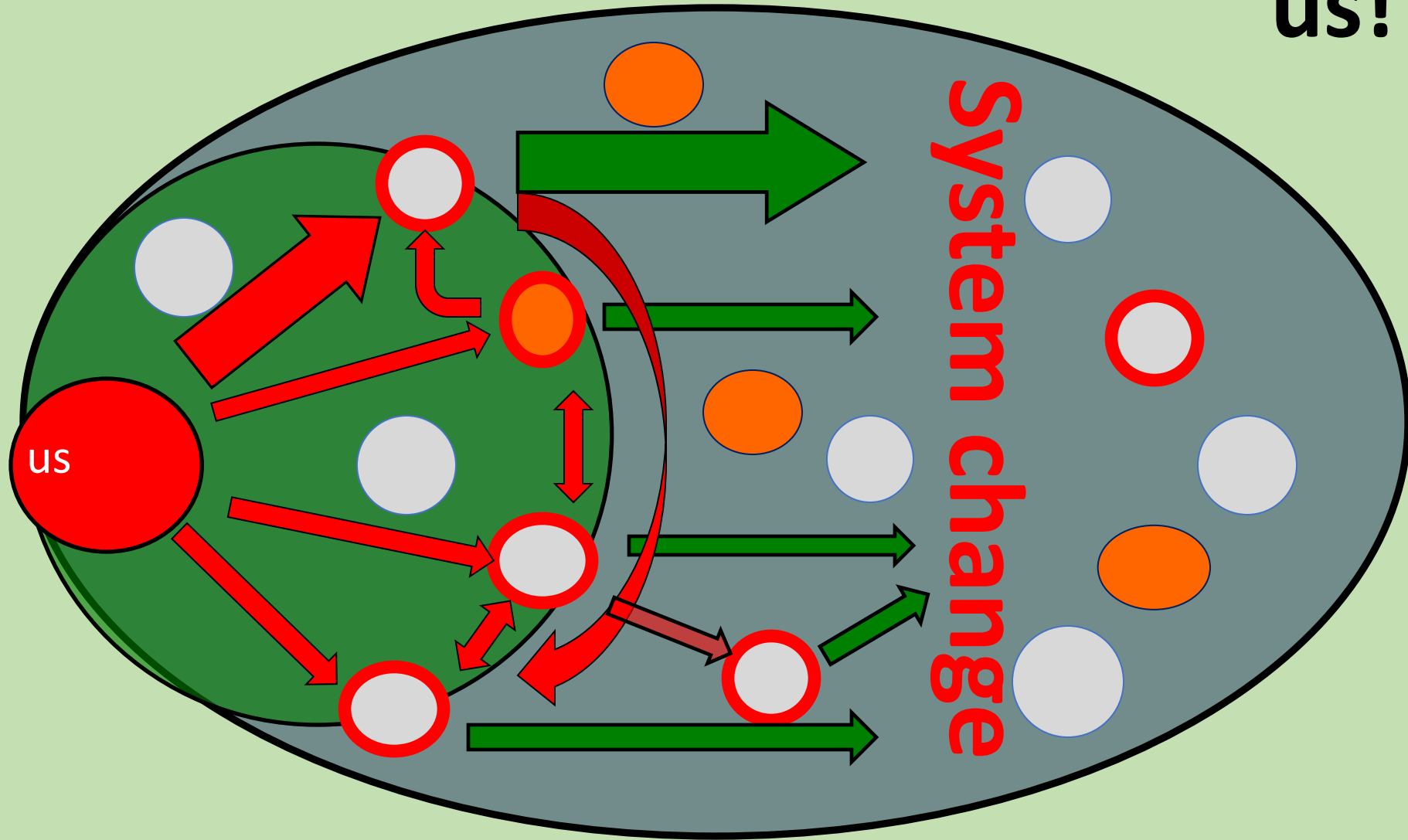
Outcome Mapping Outcome Harvesting

Community Research Webinar

August 2021

Jeph Mathias, Suzanne Andrew

Changing a system- its not about us!



System influencers



People of Interest



Boundary Partners



too complex to solve...
unpredictable
...too important not to!



too complex to solve...
unpredictable
...too important not to!





too complex to solve...
unpredictable
...too important not to!

Reverse Logic

Outcome centred

Only 2 principles



Outcomes?

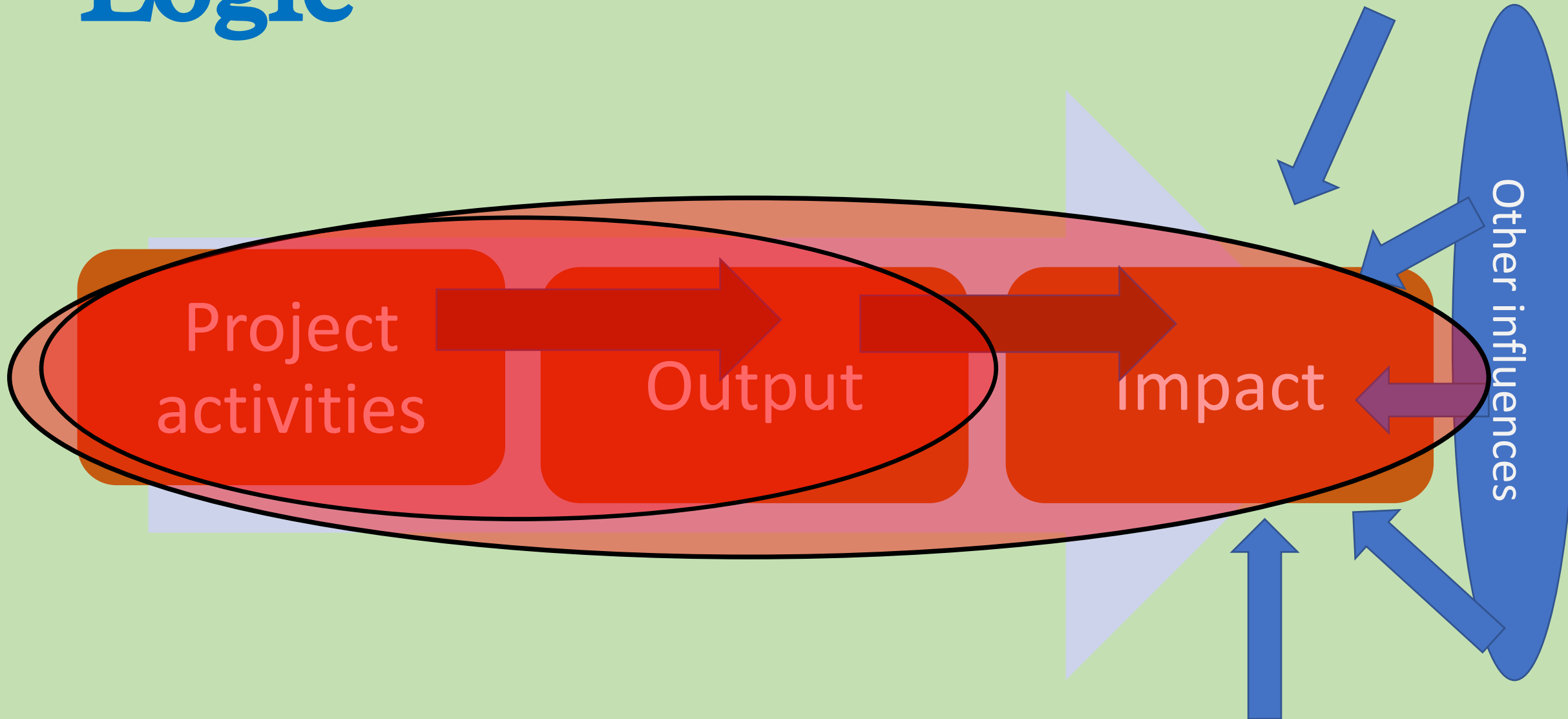
- OM: Change of **behaviour**, **attitude**, **relationship**, **policy**.
- OH needs verifiable outcomes= **Documented**, **documentable** **new behaviour or policy**

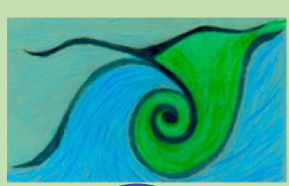


Logic



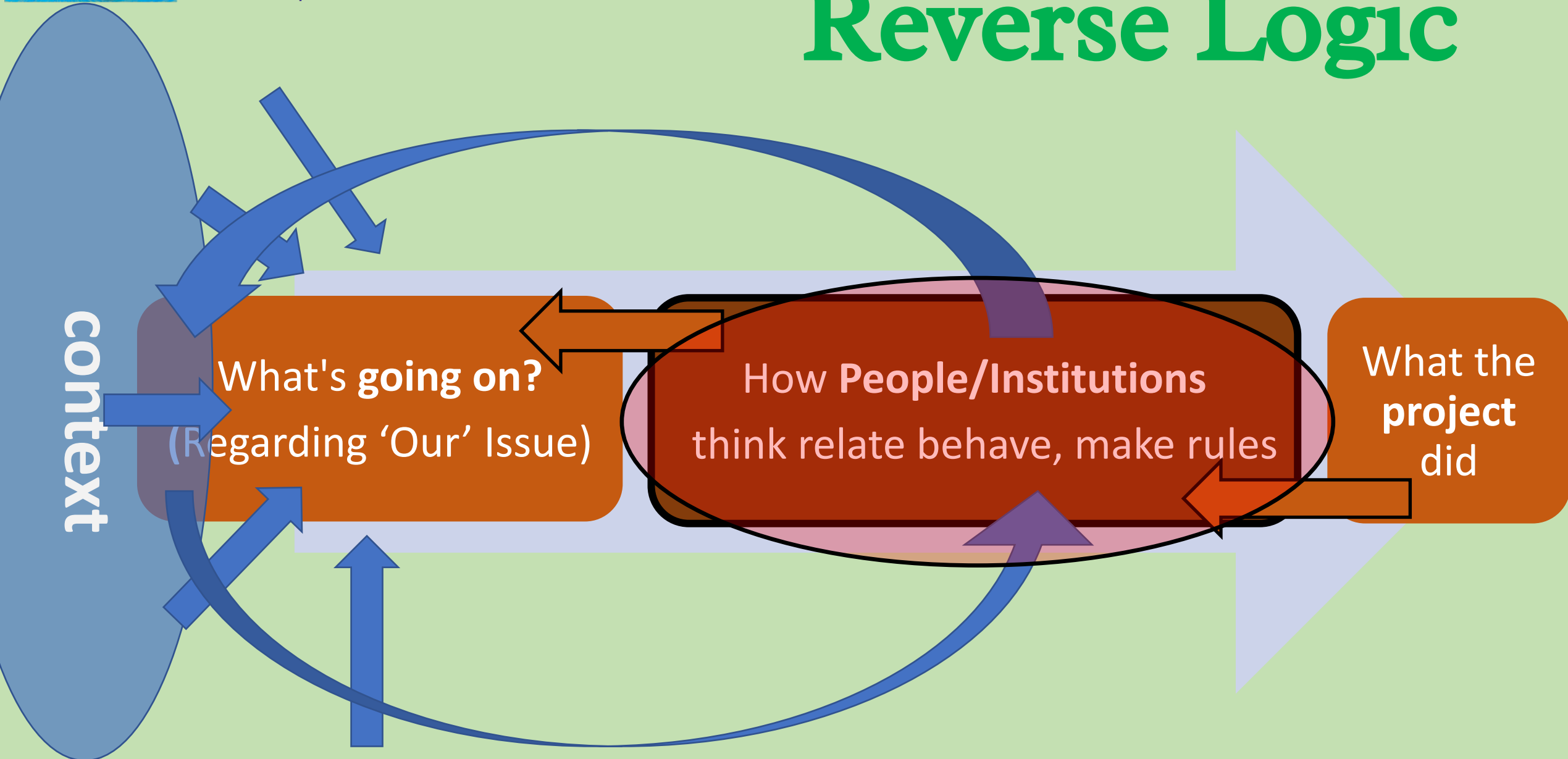
too complex to solve...
unpredictable
...too important not to!



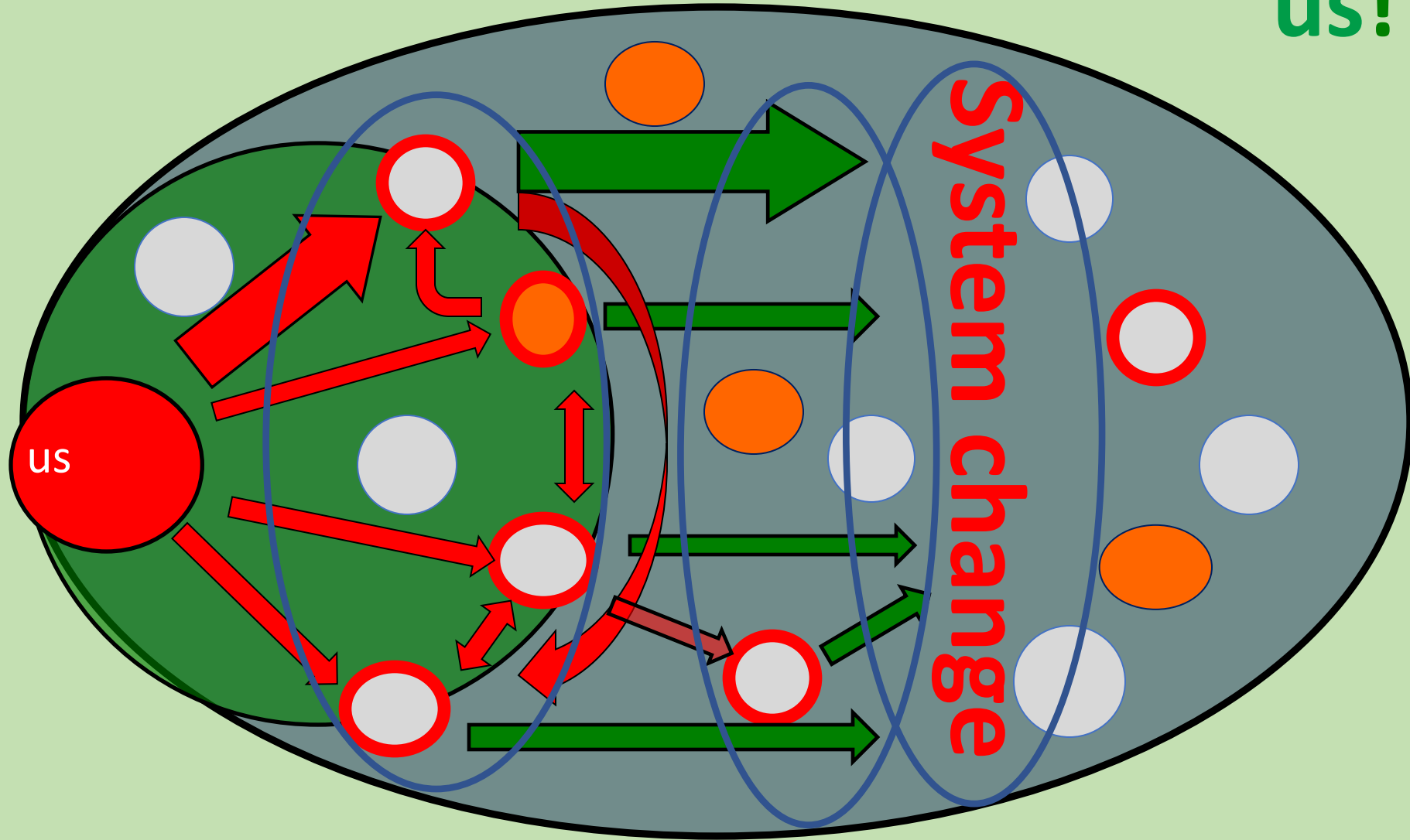


too complex to solve...
unpredictable
...too important not to!

Reverse Logic



Changing a system- its not about us!



System influencers



People of Interest



Boundary Partners



too complex to solve...

unpredictable

...too important not to!



Over to
Suzanne...

Comet:

- What's the system you're trying to contribute to?
- What do you think you need to do to stimulate change?
- Looking back to evaluate- how would you do it?
- Has OM or OH added anything?

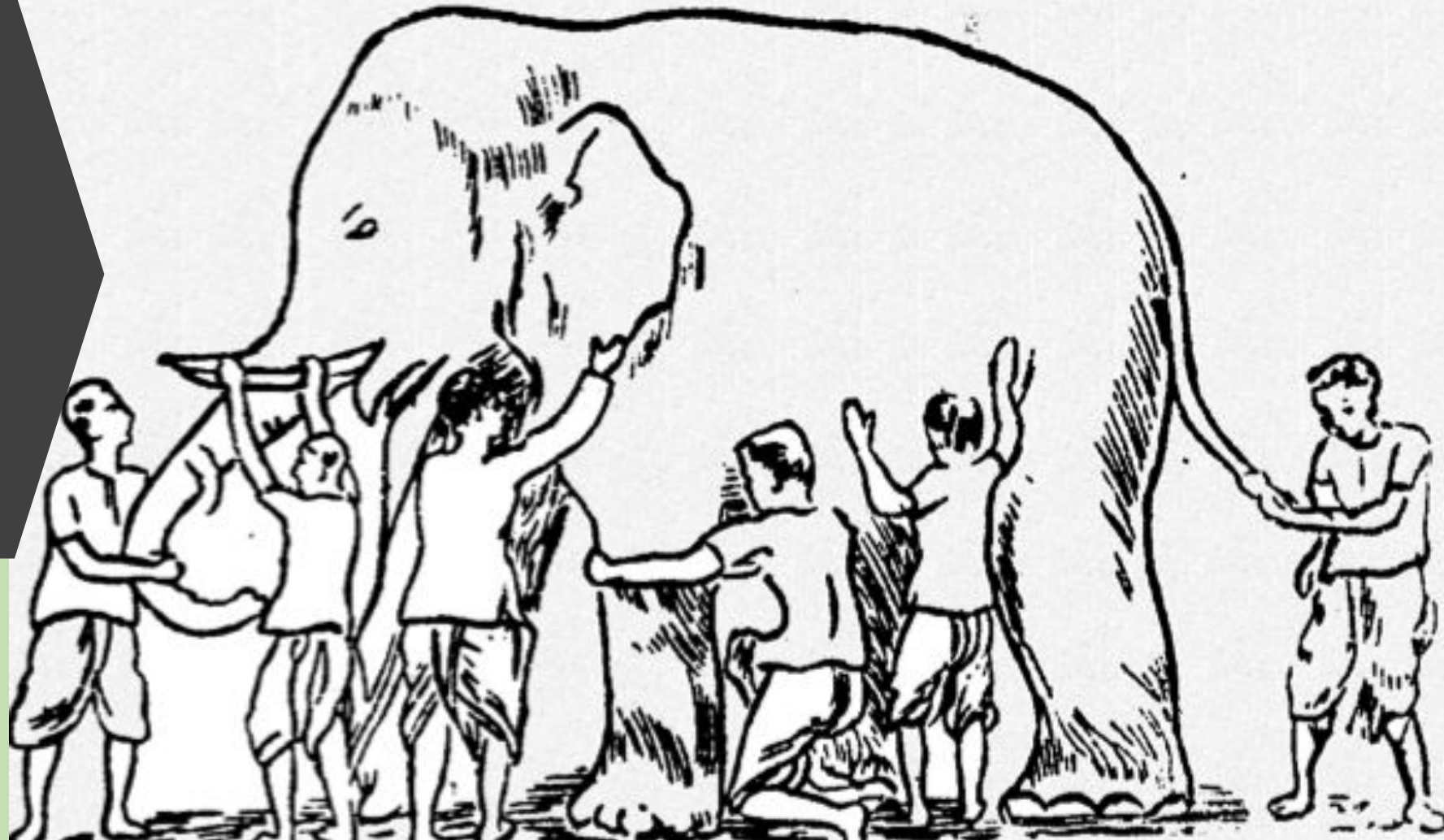


too complex to solve...
unpredictable
too important not to!

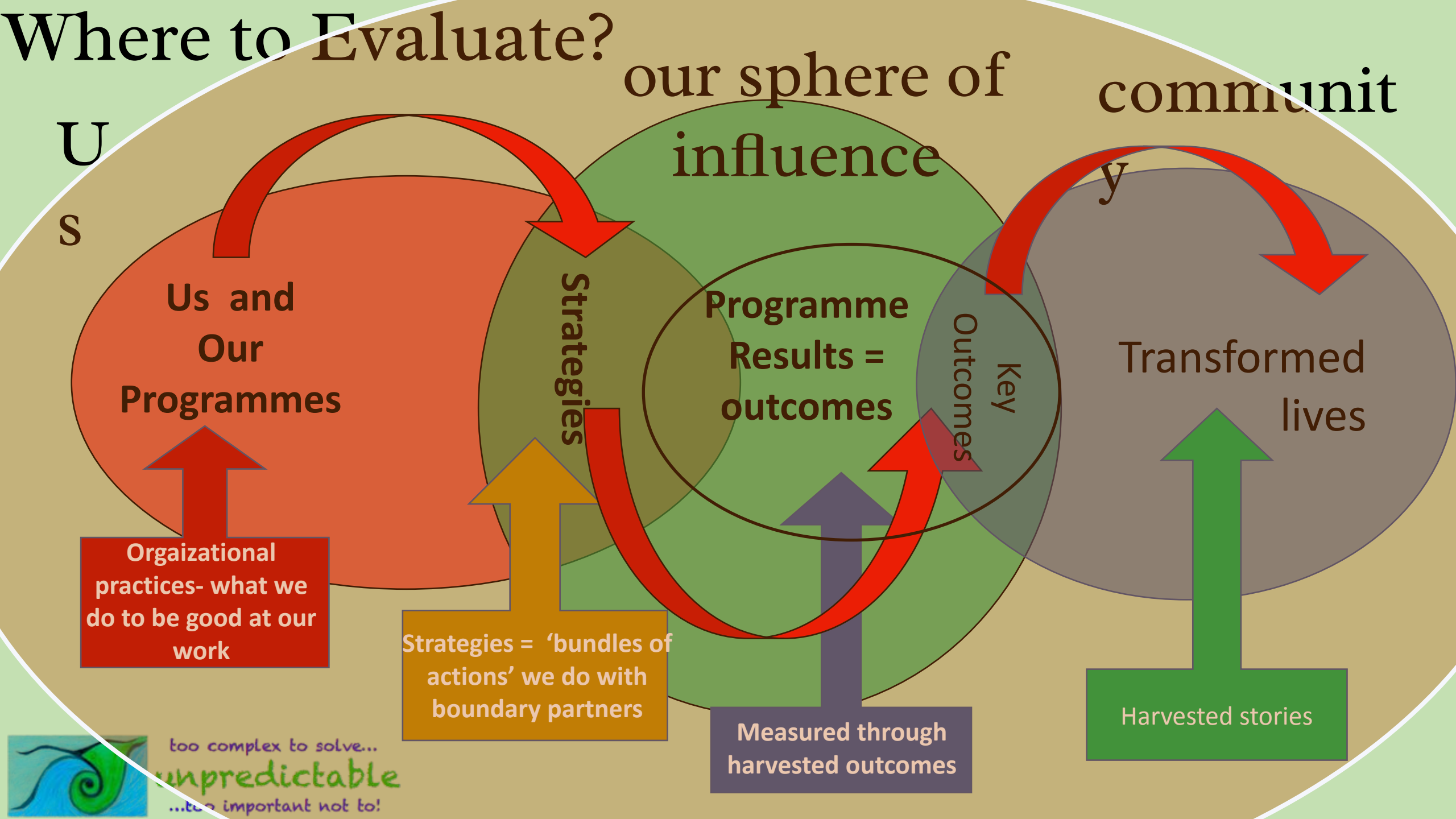


too complex to solve...
unpredictable
...too important not to!

Jeph's Questions



Where to Evaluate?



Apply it to
your Mahi...

- What's the "system" that might be constructed another way?
- Which people, groups of people or institutions need to change for that to happen?
- What do you need to do to help that happen?
- What would you look for to tell you if its working?



too complex to solve...
unpredictable
...too important not to!